

Verso R 1000 U C5

komfovent®
powered by
Breathe with us
VENTILAIR GROUP

Nominal air flow according to ErP 2018, m³/h	983
Nominal air flow according to ErP 2018, l/s	273
Electric air heater capacity, kW / Δt, °C	3/8,9
Supply voltage HE, V	3~400
Supply voltage HW, V	1~230
Maximal operating current HE, A	7,3
Maximal operating current HW, A	3,3
Electric power input of the fan drive at maximum flow rate, W	180
Filters dimensions BxHxL, mm	800x400x46
Unit dimensions BxHxL, mm	906x905x1355
Panel thickness, mm	50
Maintenance space, mm	800
Unit weight, kg	196



Acoustic data

A-weighted sound power level L_{wa} , dB(A) at nominal flow rate

Supply inlet	59
Supply outlet	73
Exhaust inlet	59
Exhaust outlet	70
Casing	52

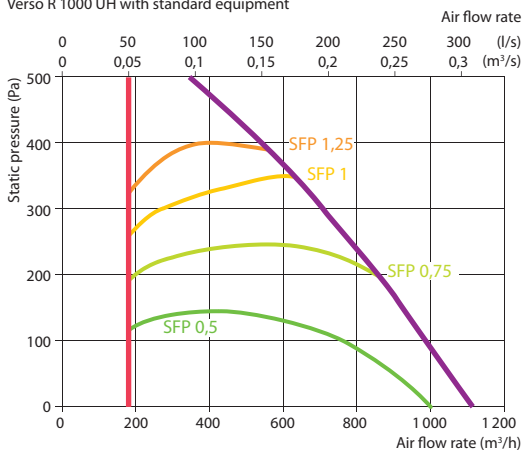
A-weighted sound pressure level L_{pa} , dB(A)

10 m² normally isolated room, distance from casing – 3 m.

Surroundings	42
--------------	----

Performance

Verso R 1000 UH with standard equipment



Temperature efficiency

	Winter					Summer		
Outside temperature, °C	-23	-15	-10	-5	0	25	30	35
After heat exchanger, °C	13,7	15,2	16,1	17,0	17,9	22,6	23,5	24,4

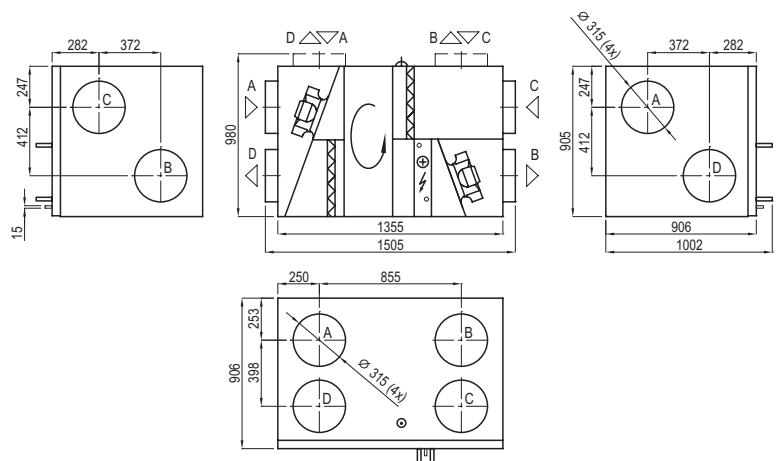
indoor +22°C, 20% RH

Changeover water/ DX heating – cooling exchanger (HCW/HCDX)

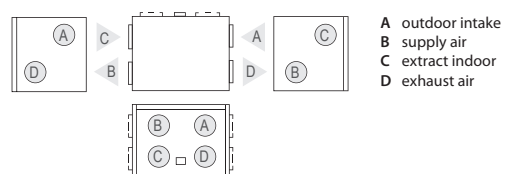
	Winter	Summer	Winter	Summer
Water temperature in/out, °C	60/40	7/12	–	–
Condensation/evaporation T, °C	–	–	45	45/5
Capacity, kW	2,6	5,1	2,6	6,7
Maximal capacity, kW	5,7	6,4	6,1	9,3
Pressure drop, kPa	1,6	4,9	–	–
Air temperature in/out, °C	13,8/22	30/18	13,8/22	30/18
Connection, " / mm		¾		½ / 22

Summer: 30°C / 50%; HCW – 899 m³/h.

Shown as right (R1)



Shown as left (L1)



Accessories

Closing damper	AGUJ-M-315+LF24/LM24
Silencer	A/D AGS-315-100-900-M
	B/C AGS-315-100-1200-M
PPU	PPU-HW-3R-15-0,63-W2
Water cooler	DCW-0,9-6
2-way valve	VVP47.15-2,5+SSP61
DX cooler	DCF-0,9-6
Cooling unit	MOU 18HFN8+KA8140